

Track and Field

- Grandstand built into slope - allows for handicapped access on top
- Concessions, restrooms, lockerroom, and storage possibilities below.
- On retaining wall overlooking remaining park space
- Overlook, scoreboard, Flag space & stairs connecting to lower park

Ball Field

- Dugouts, bleachers, practice mounds, & batting cage

Multi-Use/Practice Field

- Flat, open space for practice, soccer, events, etc.
- Combined with 2 Little League Fields to make space more efficient

Pool Area

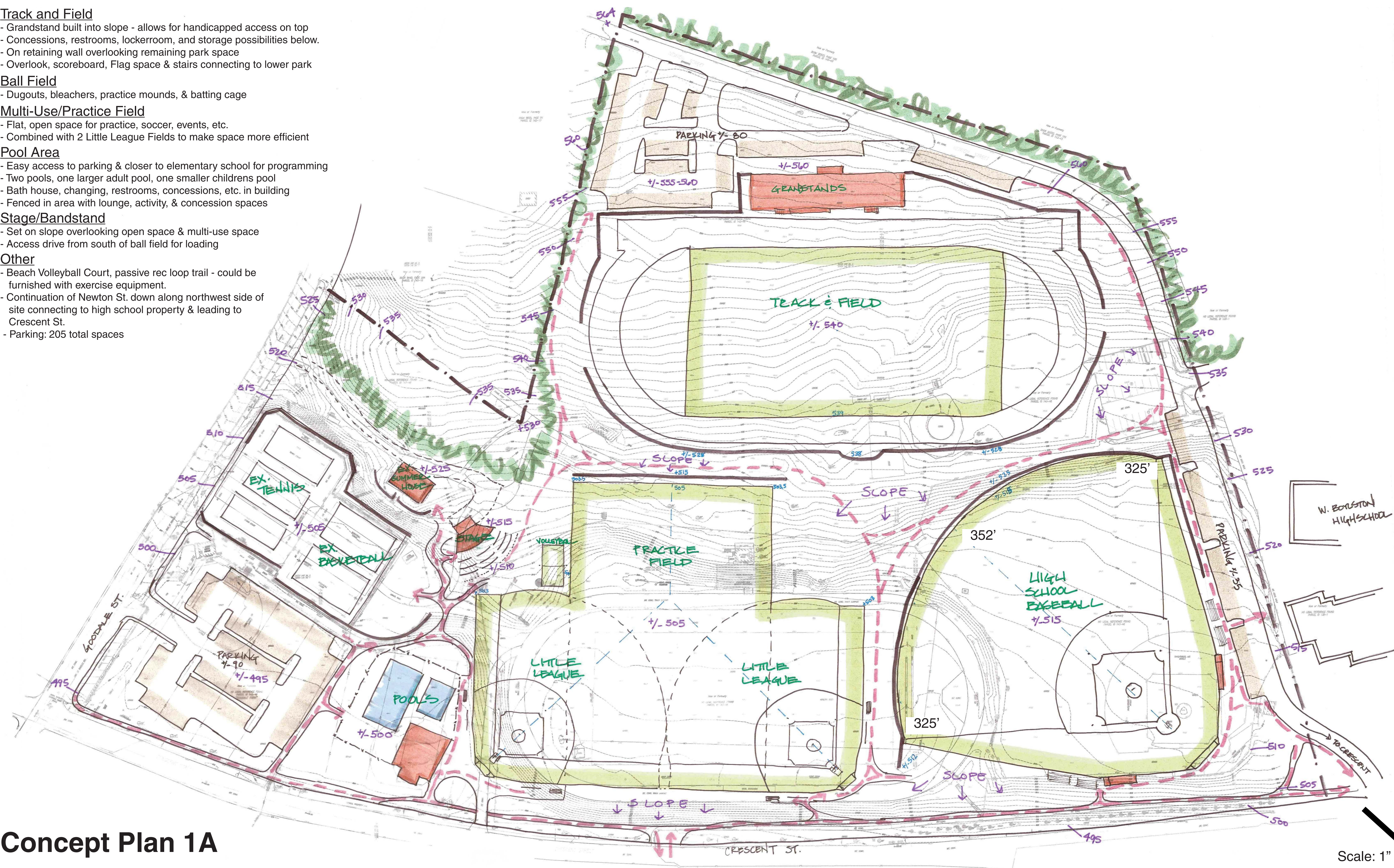
- Easy access to parking & closer to elementary school for programming
- Two pools, one larger adult pool, one smaller childrens pool
- Bath house, changing, restrooms, concessions, etc. in building
- Fenced in area with lounge, activity, & concession spaces

Stage/Bandstand

- Set on slope overlooking open space & multi-use space
- Access drive from south of ball field for loading

Other

- Beach Volleyball Court, passive rec loop trail - could be furnished with exercise equipment.
- Continuation of Newton St. down along northwest side of site connecting to high school property & leading to Crescent St.
- Parking: 205 total spaces



Concept Plan 1A





Track and Field

- Grandstand built into slope - allows for handicapped access on top
- Concessions, restrooms, lockerroom, and storage possibilities below.
- On retaining wall overlooking remaining park space
- Overlook, scoreboard, Flag space & stairs connecting to lower park

Ball Field

- Dugouts, bleachers, practice mounds, & batting cage

Multi-Use/Practice Field

- Flat, open space for practice, soccer, events, etc. combined with 2 Little League fields for efficient use of space

Pool Area

- Easy access to parking & closer to elementary school for programming
- Two pools, one larger adult pool, one smaller childrens pool
- Bath house, changing, restrooms, concessions, etc. in building

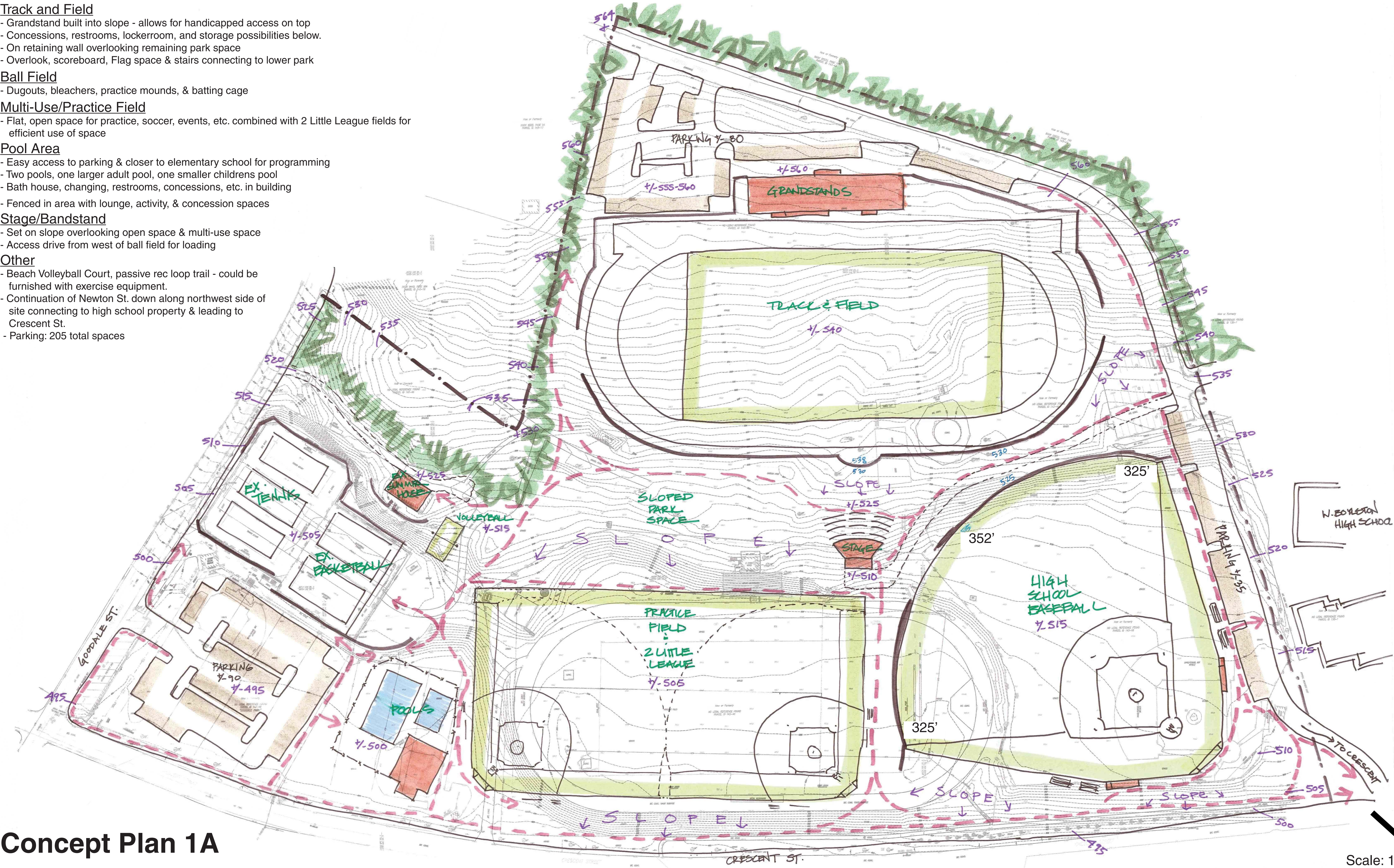
- Fenced in area with lounge, activity, & concession spaces

Stage/Bandstand

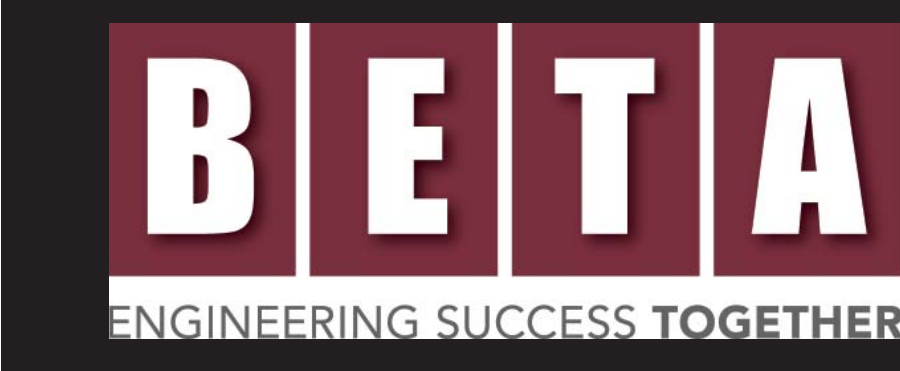
- Set on slope overlooking open space & multi-use space
- Access drive from west of ball field for loading

Other

- Beach Volleyball Court, passive rec loop trail - could be furnished with exercise equipment.
- Continuation of Newton St. down along northwest side of site connecting to high school property & leading to Crescent St.
- Parking: 205 total spaces



Concept Plan 1A





### Track and Field

- Grandstand built into slope - allows for handicapped access on top
- Concessions, restrooms, lockerroom, and storage possibilities below.
- On retaining wall overlooking remaining park space
- Overlook, scoreboard, Flag space & stairs connecting to lower park

### Ball Field

- Dugouts, bleachers, practice mounds, & batting cage

### Multi-Use/Practice Field

- Flat, open space for practice, soccer, events, etc.

### Park Pool Space

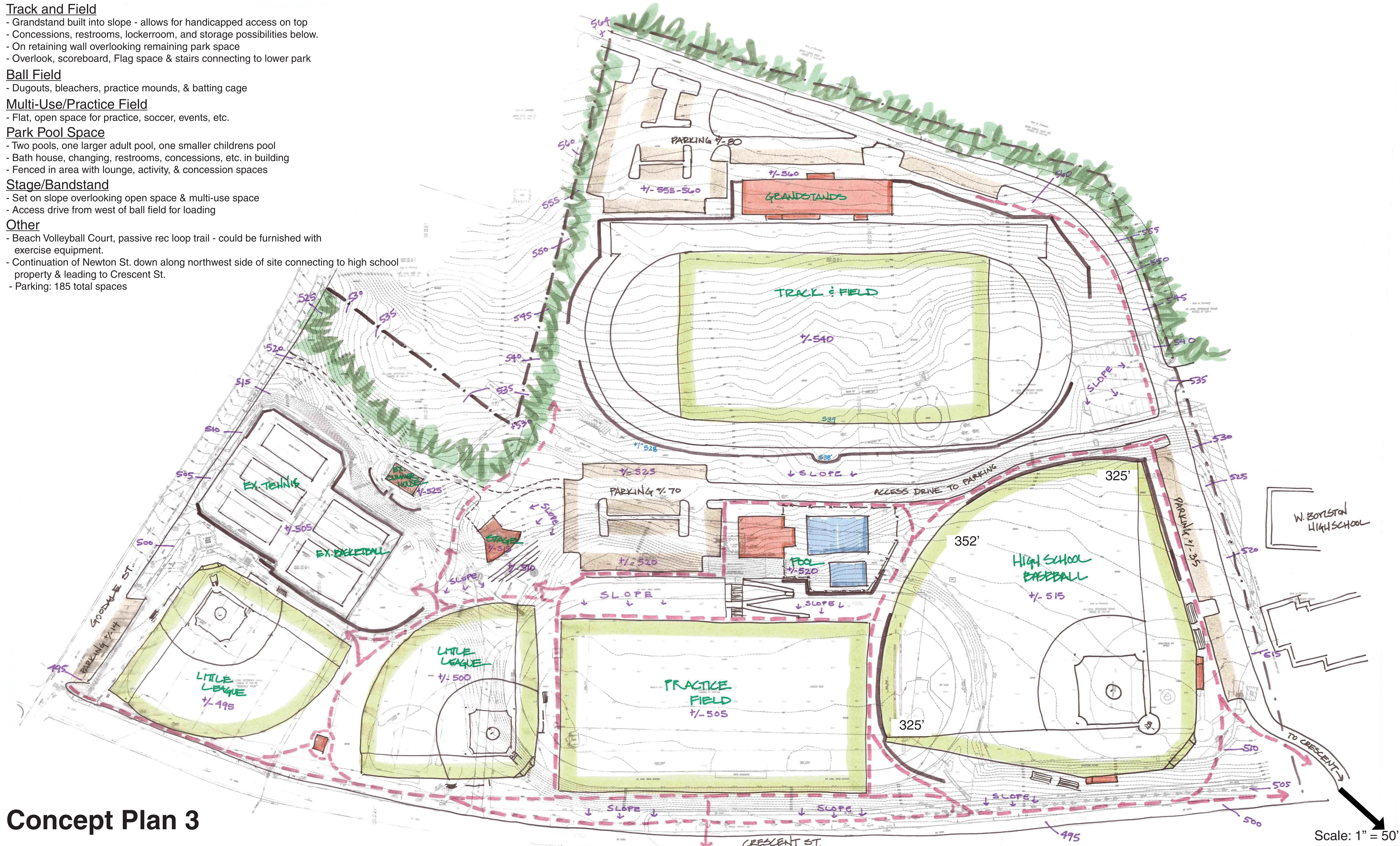
- Two pools, one larger adult pool, one smaller childrens pool
- Bath house, changing, restrooms, concessions, etc. in building
- Fenced in area with lounge, activity, & concession spaces

### Stage/Bandstand

- Set on slope overlooking open space & multi-use space
- Access drive from west of ball field for loading

### Other

- Beach Volleyball Court, passive rec loop trail - could be furnished with exercise equipment.
- Continuation of Newton St. down along northwest side of site connecting to high school property & leading to Crescent St.
- Parking: 185 total spaces



## Concept Plan 3



Track and Field

- Grandstand built into slope - allows for handicapped access on top
- Concessions, restrooms, lockerroom, and storage possibilities below.
- On general current space in park
- Overlook from top of grandstands & parking are to track & field

Ball Field

- Dugouts, bleachers, practice mounds, & batting cage
- Left Field shortened by retaining wall to Track & Field to absolute minimum of 300'

Multi-Use/Practice Field

- Flat open space for practice, events, etc.
- Located in Grove Area, shares portion of space with 1 Little League Field

Park Pool Space

- Two pools, one larger adult pool, one smaller childrens pool
- Bath house, changing, restrooms, concessions, etc. in building
- Fenced in area with lounge, activity, & concession spaces
- Located in center of park with parking adjacent

Stage/Bandstand

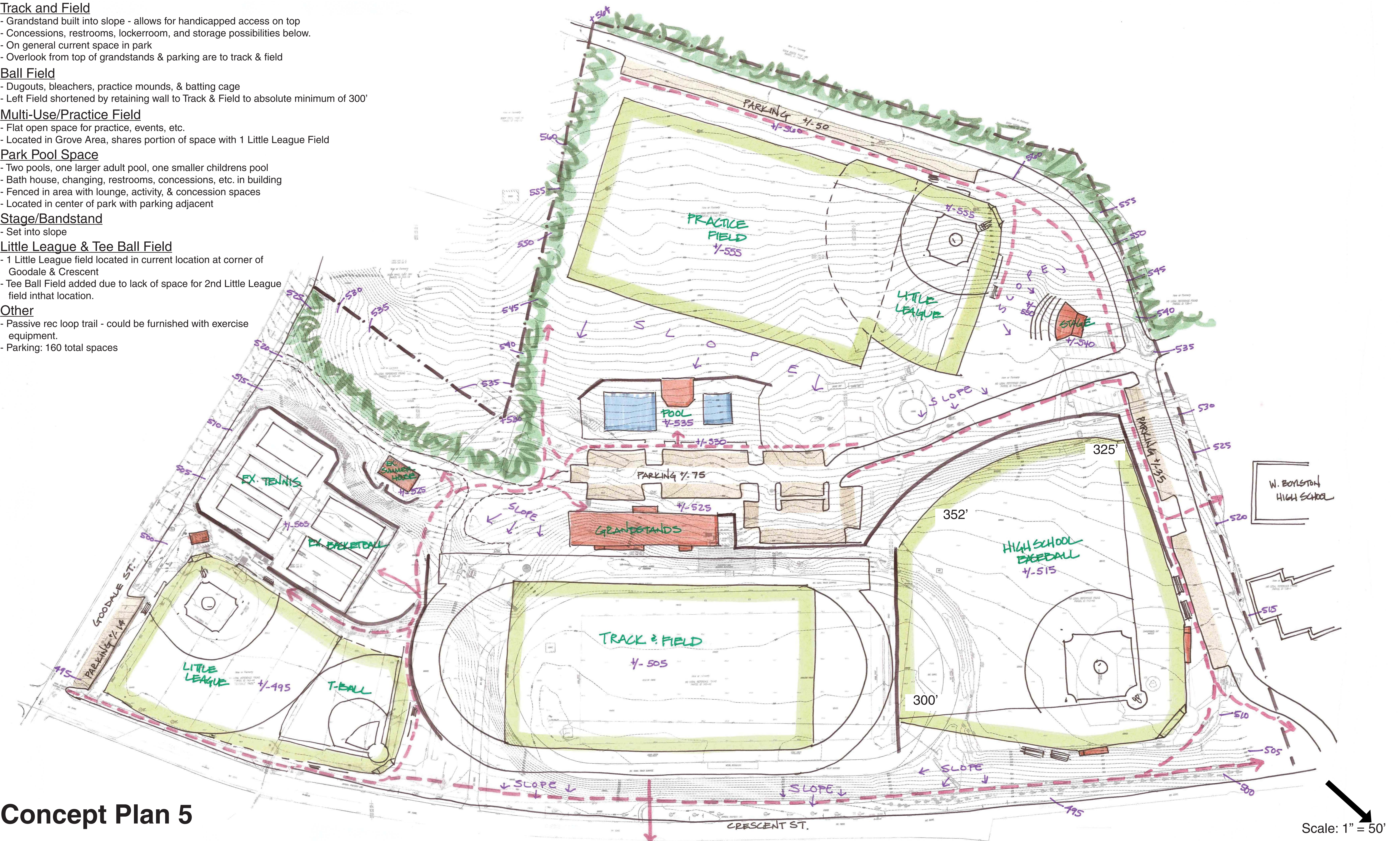
- Set into slope

Little League & Tee Ball Field

- 1 Little League field located in current location at corner of Goodale & Crescent
- Tee Ball Field added due to lack of space for 2nd Little League field in that location.

Other

- Passive rec loop trail - could be furnished with exercise equipment.
- Parking: 160 total spaces



Concept Plan 5